



LAMBS LANE NEWS

WEEK 11 - 22.11.24



MESSAGE FROM THE HEADTEACHER

This week was the start of Christmas for Lambs Lane as the KS1 children rehearsed their nativity, the foundation stage learnt Christmas carols and children across have begun to produce festive items for the Christmas Fair.

Many of the hampers in school are still quite empty so we would greatly appreciate more donations.

Have a lovely weekend and enjoy the heatwave for the next two days.

Alex Leaver

Attendance

As a school, we aim to have above **96%** attendance. We hope you can support us in this goal!

Your schedule for next week:



Monday	Tuesday	Wednesday	Thursday	Friday
3.30—4.30 KS2 Netball	3:30 — 4:30 Y1/2 Ball Games	3:30 — 4:30 Y3/4 Tag Rugby	3:30 — 4:30 Y5/6 Dodgeball	Y 4 Cornet Concert 9.30am—
				PTA Christmas Fair 3.30pm—5pm

Minutes missed of school due to lateness

This week we have had **221 minutes** of lost learning due to lateness. **39 pupils** were late this week.

Noticeboard

Trades People Wanted

We are looking for the following:

- Carpenters
- Plumbers & Heating Engineers
- Electricians
- Grounds workers
- Roofers
- Fencing
- Builders
- Decorators

Please contact Lisa Lainsbury in the school Office. llainsbury@lambslane.wokingham.sch.uk if you would like to provide a quote.

PARKING

A little moan about parking at drop off:

Please do not park in the drop off zone for any length of time. We have had parents parking from 8.30am onwards. This zone is to enable a smoother flow of traffic. If you wish to park up, please use the school carpark and walk your children across the zebra crossing.

Please do NOT park on our neighbour's driveways. These are private property.

The school carpark – we encourage parents to use the carpark when bringing their children to school, however it has been reported that parking is taking place alongside the school field (in the carpark) – this prevents entrance to the rest of the carpark and causes traffic build up on the already busy roadway. Please enter into the carpark and find a space. We do not own the roadway outside the school, so have little authority over it but we want to ensure the safety of the school community to the best of our ability. Your co-operation is appreciated.

LOST PROPERTY

We have a full tub of lost property. All items are un-named., a lot of them new. This includes water bottles and the occasional lunchbox/snack box, gloves, hats and sometimes trainers.

If your child is missing clothing please ask them to check the lost property bin.

Un-claimed un-named clothing will be donated to the little recyclers scheme on Tuesday 10th December.

Please remember to label/name your child's possessions.

Adult Education

Wokingham Borough Council run a number of adult education courses. Below are a number of links to information:

[Newsletter sign-up.](#)

Anyone interested can sign up on the main course page :

[Web.Enrol Adult Education Service](#)

Eligibility criteria is on their website here:

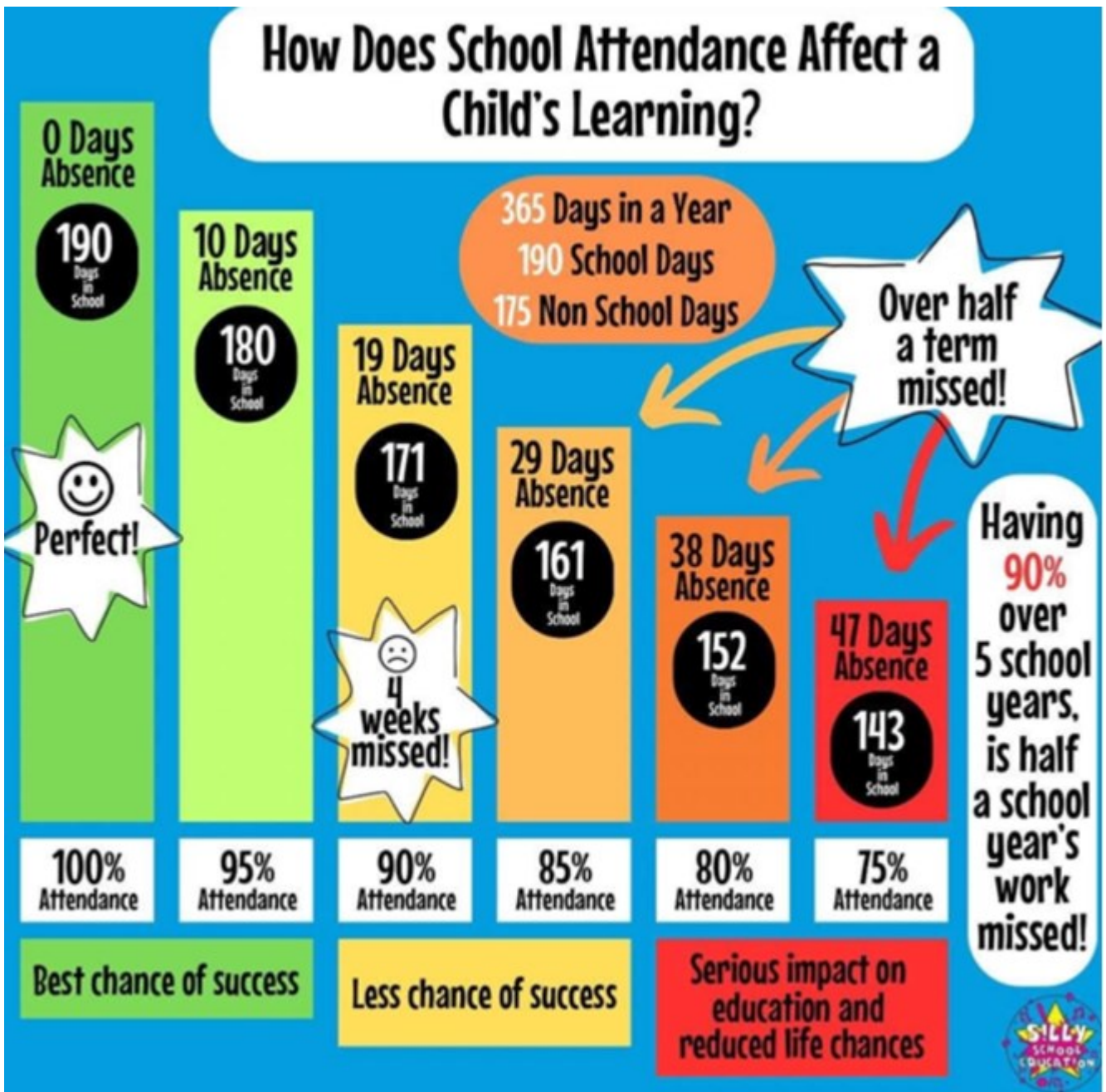
[home Adult Education Service](#)



How does attendance affect outcomes for pupils?

Being in school is important to a child's achievement, wellbeing and wider development. Evidence shows that the children with the highest attendance throughout their time in school gain the best GCSE and A Level results.

Government research found that pupils that performed better at the end of pri-



Children in Key Stage 2 who didn't achieve the expected standard in Reading, Writing and Maths missed on average 4 more days per school year than those whose performance exceeded the expected standard.