

Statutory assessments

EYFS GLD

Lambs Lane		National (2023)	Wokingham (2023)
2023	2024	67%	75%
63%	77%		

Phonic Screening

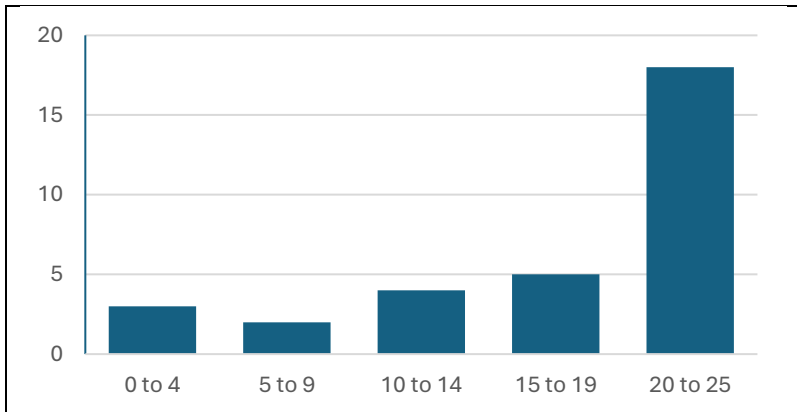
Year 1	Year 2	
87% passed	Y1 check	Y2 check
	90% passed	96% passed

KS1 (Non-Statutory)

	Pre-KS	Towards	At	Greater	At or GD	National 2023		Wokingham 2023	
						At	GD	At	GD
Reading	4%	14%	63%	19%	82%	68%	19%	75%	26%
Writing	4%	21%	63%	11%	75%	60%	8%	67%	11%
Maths	4%	14%	57%	25%	82%	70%	16%	78%	23%
Science		4%	96%		96%	79%		85%	
Combined				3%	70%	~55%	~6%	63%	9%

Year 4 Multiplication Check

There is currently no 'pass mark' for the Multiplication check.



Score	% 2024	% 2023	National
25	22% (7)	23% (7)	~35%
20 or above	56%	43%	63%

KS2

SATs Test	< 100	100+	110+	Average	National 2024		Wokingham 2024	
					At or GD	GD	At or GD	GD
Reading	27%	73%	33%	107	74%	28%	80%	38%
GPS	27%	77%	47%	109	72%	32%	78%	42%
Maths	20%	80%	40%	108	73%	24%	79%	34%

Teacher assessment	Pre-KS	Towards	At	GD	At or GD	National 2024		Wokingham 2024	
						At or GD	GD	At or GD	GD
Writing	13%	14%	60%	13%	73%	72%	13%	76%	15%
Science		27%	73%		73%	81%		88%	
RWM combined				7%	67%	61%	8%	66%	11%

Notes on KS2 outcomes:

Lambs Lane average scaled score higher than both Wokingham and National figures in Reading, GPS and Maths.

Lambs Lane percentage of pupils working at or above the expected standard in writing was roughly in line with the National figure (-1%) but the percentage of GDS pupils was well above the National. Lambs Lane was still lower than the Wokingham data for reading.

Lambs Lane came out higher than National in GPS but 1% lower than Wokingham. The percentage of children achieving GDS was considerably higher than both National and Wokingham.

In line with National data for writing however still below the Wokingham figures in this area.

Maths was a great success for Lambs Lane – above both National and Wokingham data (children working at the expected standard as well as those working at GDS)

Despite having a considerably larger group of disadvantaged pupils than other Wokingham schools, Lambs Lane disadvantaged gap in most subjects was similar or better than Wokingham averages.